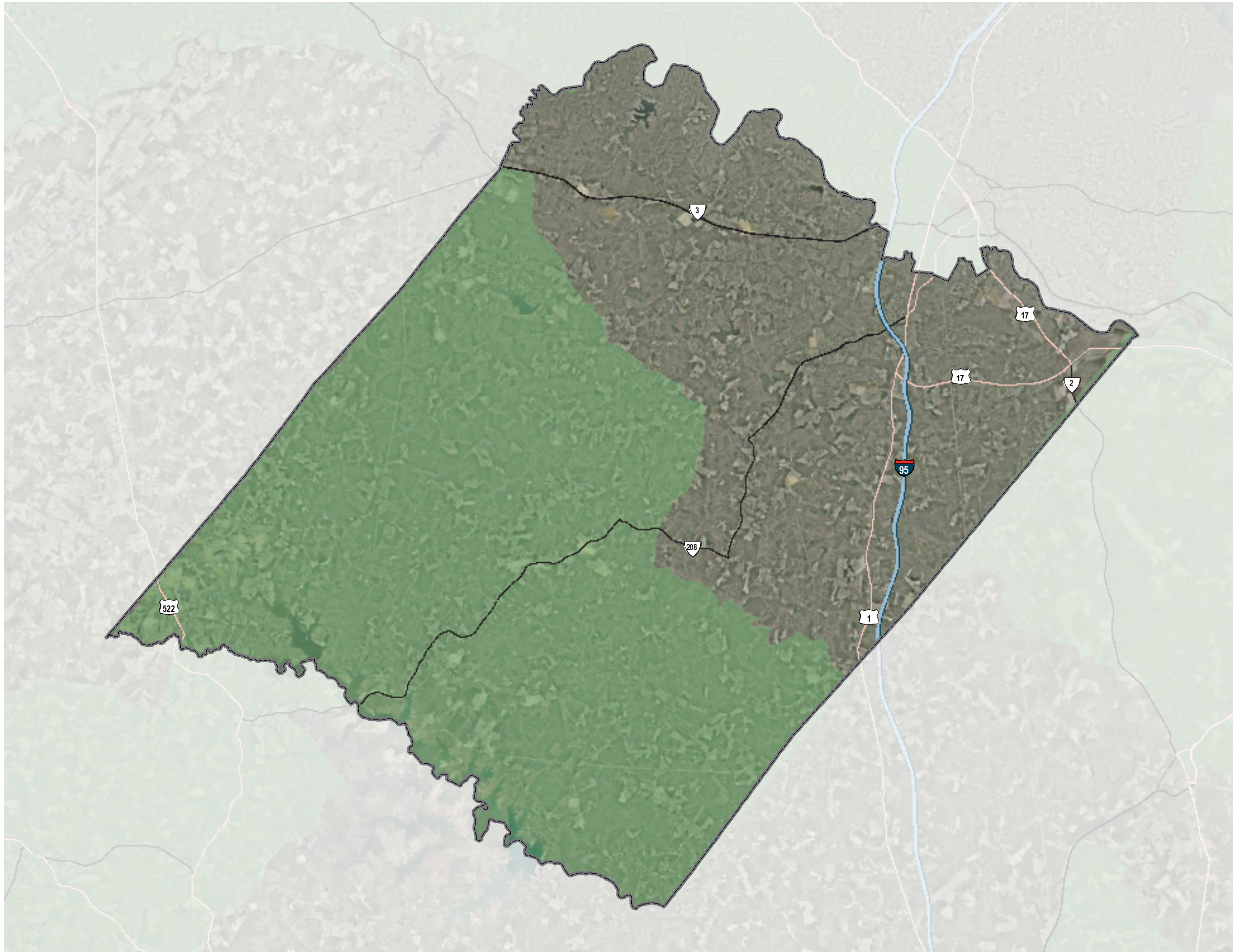
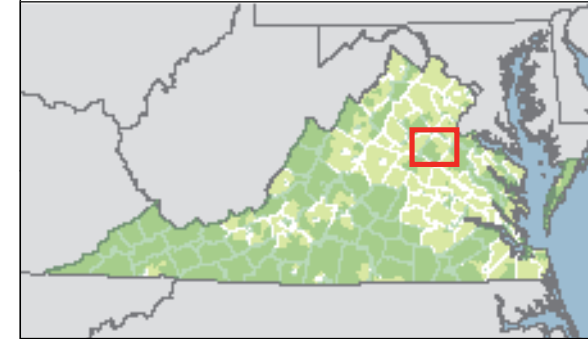


# VIRGINIA'S NEW MARKETS TAX CREDIT AREAS SPOTSYLVANIA COUNTY



-  NEW MARKETS TAX CREDIT AREA
-  INTERSTATE
-  HIGHWAY
-  PRIMARY HIGHWAY
-  COUNTY BOUNDARY

Sources:  
Virginia Economic Development Partnership 2008  
Virginia Base Mapping Program 2007  
Virginia Department of Transportation 2007

12/30/2008

