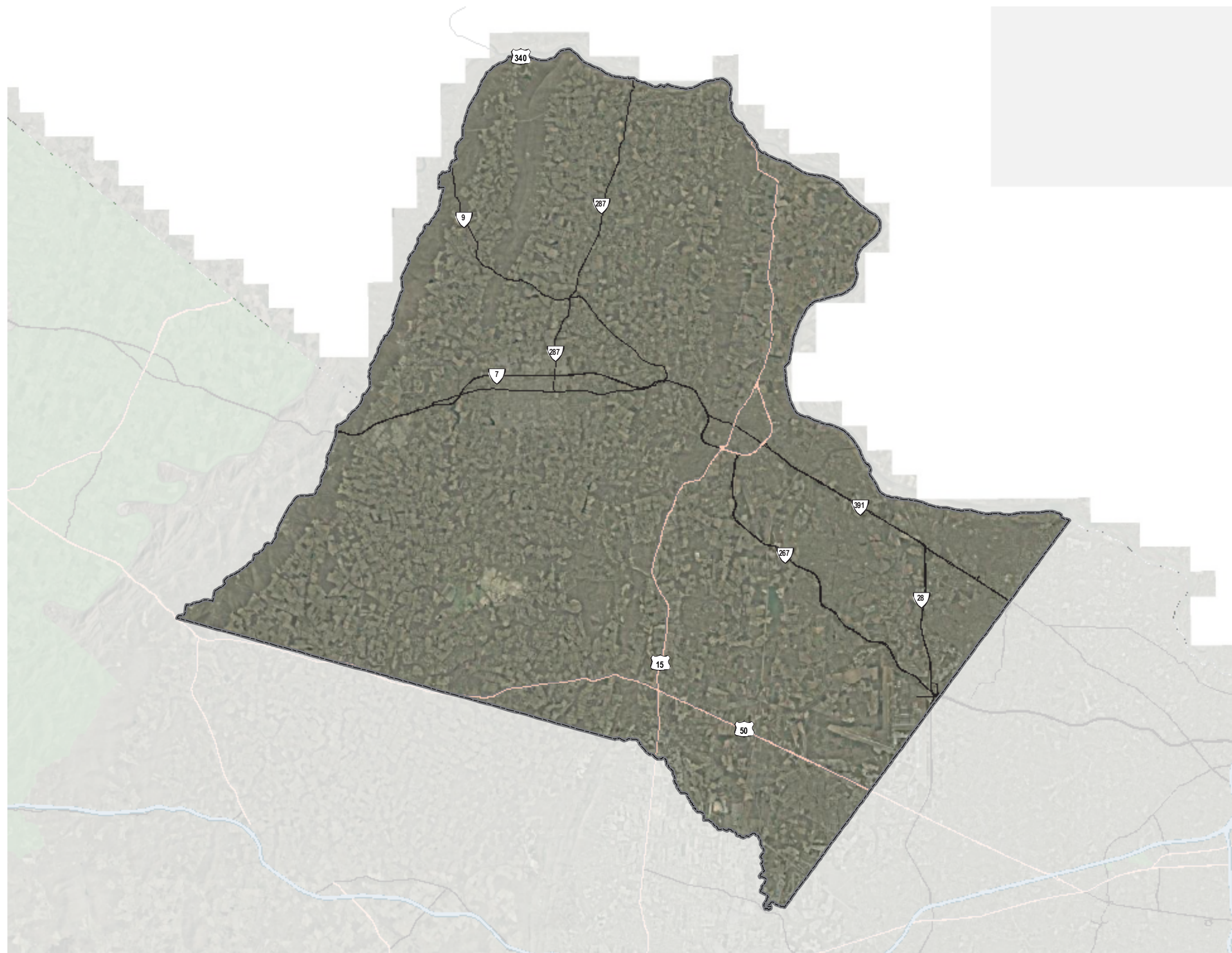
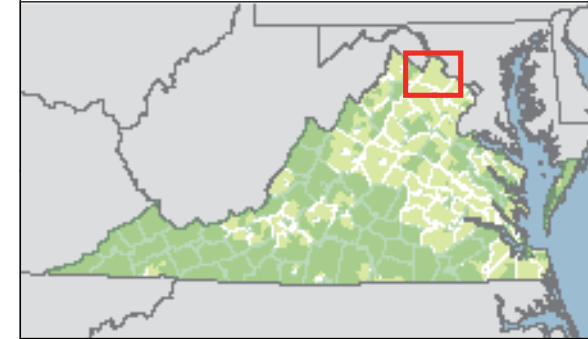


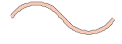




VIRGINIA'S NEW MARKETS TAX CREDIT AREAS LOUDOUN COUNTY



-  NEW MARKETS TAX CREDIT AREA
-  INTERSTATE
-  HIGHWAY
-  PRIMARY HIGHWAY
-  COUNTY BOUNDARY

Sources:
Virginia Economic Development Partnership 2008
Virginia Base Mapping Program 2007
Virginia Department of Transportation 2007

12/29/2008

