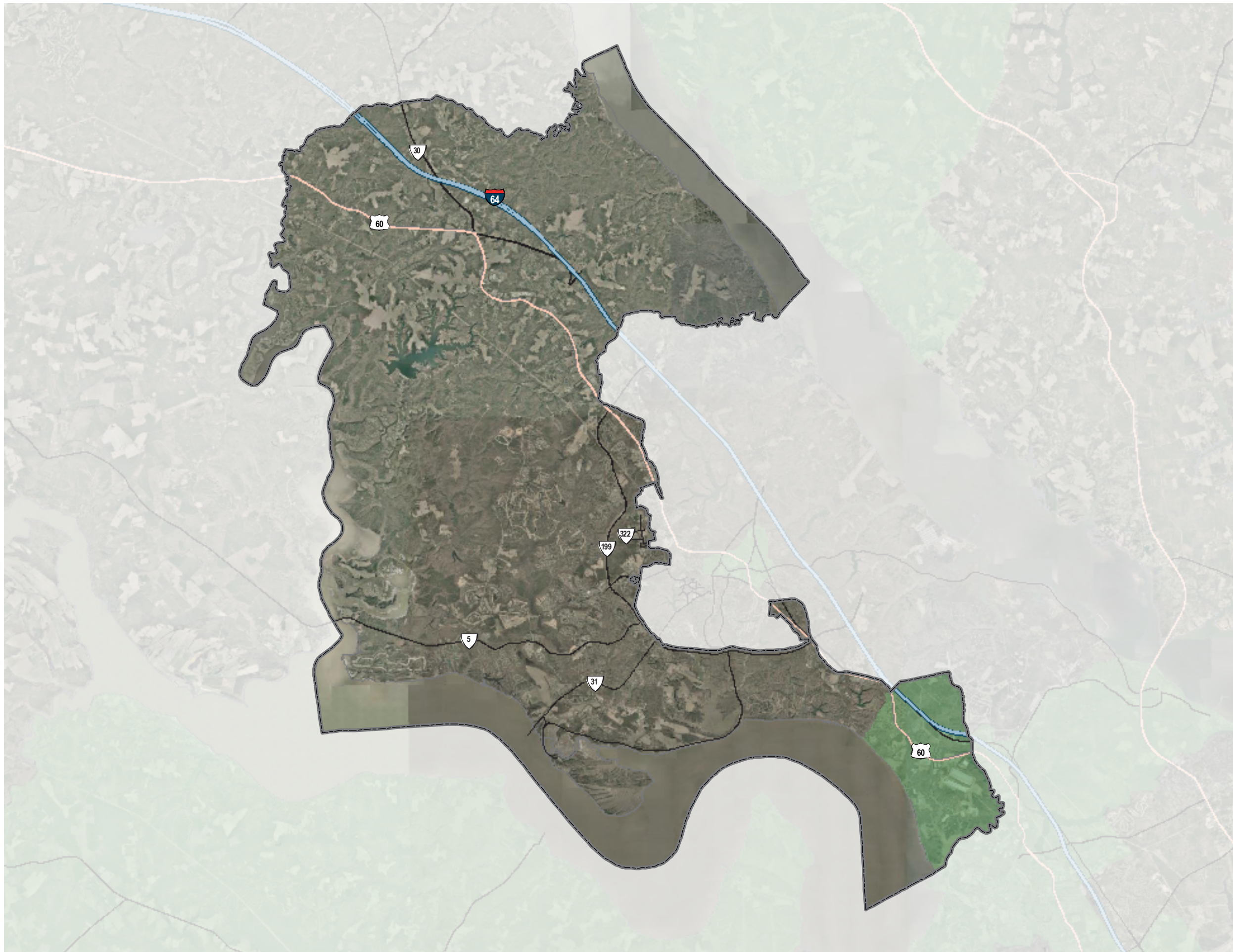
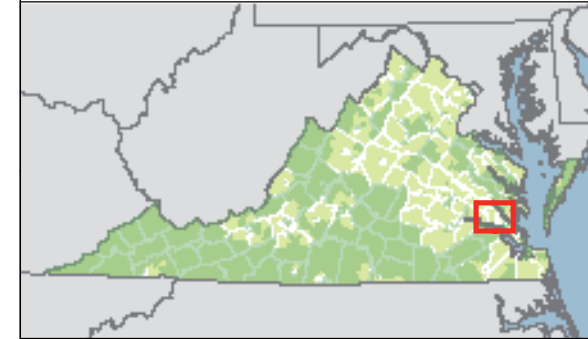


# VIRGINIA'S NEW MARKETS TAX CREDIT AREAS JAMES CITY COUNTY



-  NEW MARKETS TAX CREDIT AREA
-  INTERSTATE
-  HIGHWAY
-  PRIMARY HIGHWAY
-  COUNTY BOUNDARY

Sources:  
*Virginia Economic Development Partnership 2008*  
*Virginia Base Mapping Program 2007*  
*Virginia Department of Transportation 2007*

12/29/2008

